

Connect / Tūhono

Making a difference *together*



Presbyterian Support
Upper South Island

Issue 1 | February 2021

Kindness shines through



We were feeling the aroha/love when many people gave Christmas presents for the children, whānau and older people we helped last year.

The generosity shown by schools, churches, organisations and individuals was amazing!

Special thanks to Rangi Ruru Girls' School who donated an incredible \$10,000 worth of gifts for some of our families and children we've been helping.

The presents left some in tears, overwhelmed by the kindness of strangers and one teenage boy received Christmas presents for the first time in four years!

It was also a time to thank and celebrate the wonderful work our volunteers had done during the year. They work tirelessly and we couldn't be without them.

Christmas lunches and other functions were held, paying tribute to the work they do for their communities.



The team in Marlborough went a step further and entered the Blenheim Christmas Parade, taking out first place for best community float. It was a super special day and they definitely earned bragging rights!



From our CEO



Welcome to the first edition of *Connect*. We decided to create *Connect* after we surveyed our supporters and donors who told us they wanted to

hear from us more often with updates on the work we're doing. (We'll continue to publish our popular *People Helping People* magazine, the next edition will be out later in April.)

So, what's been happening at Presbyterian Support? Thankfully 2020 is behind us. It was, without exception, a year like no other with the Covid pandemic, but our team at Presbyterian Support Upper South Island rose to the challenge of continuing our work under exceptional circumstances.

As we've seen, the pandemic is ever changing, at times forcing us to shift levels quickly without much warning. Regardless of the levels, please continue to care for others and don't forget to use the COVID tracer app or sign in when you're out and about.

Despite the uncertainties, 2021 will be a year full of exciting possibilities and opportunities so watch this space!

Ngā mihi

Barry Helem
Chief Executive Officer

our services



W psuppersouth.org.nz

P 0800 477 874



DONATE



VOLUNTEER



FOLLOW US



Budding artists win accolades

Three girls from Rangi Ruru Girls' School are the winners of an art competition held late last year.

Coordinated by Rangi Ruru Girls' School and Presbyterian Support, art students at the school were invited to submit a piece of art that would be re-created as greeting cards for Presbyterian Support Upper South Island.

The response was amazing with fifty-one entries received. The calibre of the designs was very high, making judging a challenging task.

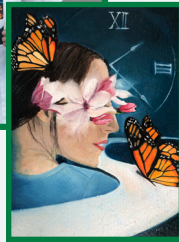
Congratulations to Hannah Margison, Esther Hwang and Sophia Smith whose talent and creativity is outstanding, with each young woman not only creating a unique piece of art, but also telling the story behind the image.

Special thanks also to Rangi Ruru Head of Learning Area - Visual Arts Kate Rivers who helped coordinate the project, encouraging the students to showcase their work by entering the competition.



Esther Hwang

Growing into an adult, the butterflies symbolise freedom and the release from child to adult, the flower symbolises innocence and in the background the clock shows time flying.



Hannah Margison

The use of grey and black for the woman represents her current state of bleakness but as the colour starts coming to life there is hope for a brighter future.



Sophia Smith

My three (of four) brothers at the beach in Christchurch. It symbolises a childhood spent at the beach.



Volunteers needed.



Help us make a difference in the lives of others!

A regular, small amount of time each week could make a huge difference to the people we care for.

Volunteer to support our Enliven programmes or become a Family Works Mentor.

Visit psuppersouth.org.nz/get-involved or call 0800 477 874.

HomeShare resonates with supporters

The last appeal for 2020 featured HomeShare member Rosita Church.

HomeShare, one of our Enliven services, brings older people together in small social groups, sharing a home-cooked meal, chatting and enjoying games such as cards, scrabble and other activities.

Our Spring/Summer appeal shared how Rosita found herself at home alone, having lost her husband. Rosita's daughter was concerned for her mother's wellbeing so she reached out to Presbyterian Support and found out about HomeShare.

Rosita is now a fully-fledged member, enjoying a weekly get-together with a small group of ladies, sharing a meal and social activities.

The story resonated with many of our supporters and together raised over \$18,000 – money that will go towards our Enliven services including HomeShare.

Thank you for supporting this valuable service and helping people like Rosita stay socially active and connected.

If you would like to find out more about our Enliven HomeShare service visit www.enlivenuppersouth.org.nz/homeshare or call us on 0800 477 874.



The value of our work

Our values underpin our work as we support children, young people, families, whānau and older people to be safe, strong and connected. 'Kaimana' or 'ways of working' help ensure we bring our values to life.

<i>Aroha</i> Compassion, Love	Aroha is about giving unconditionally, listening and encouraging each other if we stumble on our journey
<i>Whakamana</i> Respectful	We are respectful and demonstrate understanding and knowledge of the cultural kawa/protocol and kaupapa/procedure of our organisation to the wider community
<i>Whakaohoho</i> Inspirational	Through our cultural awareness and understanding, we can encourage and inspire clients on their own journey
<i>Hoaketanga</i> Purposeful	We empower clients by supporting them without judgement and being respectful when exploring ways of working together
<i>Toitū</i> Sustainable	We foster strength, independence and growth for future generations
<i>Kotahitanga</i> Cohesive	We are inclusive, do not judge and by working together we work for the wellbeing of everyone
<i>Tauhere</i> Connected	We increase social inclusion, justice and connectedness with all people

West Coast students win education scholarships



Six West Coast students have been awarded \$2,000 each from the Dennis Moore Memorial Scholarship to help them further their education.

Congratulations to Savannah Hart, Micaela Aldridge, Charlie-Rose Haycock, and Tara Shepherd from Buller High School, Sarah Gibbs from Westland High School and Stefaine Wickes from John Paul II High School who are the 2020 recipients of the Dennis Moore Memorial Scholarship.

Each of the young people have received \$2,000 to help them meet the costs of their tertiary studies this year.

Courses they have chosen include teaching, beauty therapy, law, social work and nursing.

Bits and bobs



Opening our doors in Christchurch

The Youth Service team hosted an Open Day at Te Korowai in January for organisations we collaborate and work with in the youth and social service sector.

About 60 people from across the sector came to the home of Presbyterian Support Upper South Island, taking the opportunity to



network, share some kai (BBQ) and getting to know each other a little better.

They were also treated to a tour of Te Korowai and met some of the wider Presbyterian Support team.

We were delighted with the turn out as these organisations give us and the youth we work with a lot of support which we value a great deal.



Ashburton teddy bears

Thanks to the generosity of the Ashburton Local Freemasons, teddy bears have been donated which we'll give to children we work with. The bears are used to reward children for being brave and those suffering from trauma.

Getting to know our people



Teri-anne Bergin, Youth Transition Worker based on the West Coast, shares some insights into her work and herself.

Where do you live and what do you like about living there?

I live in Greymouth. I like the fact it's a one minute commute to work in the morning!!

I love living on the Coast, with its spectacular coastal drive from Greymouth to Westport – it's definitely my 'happy place' with its stunning scenery. Combined with

a great community, family, friends and neighbours, it makes it an easy choice to live here.

How long have you worked for Presbyterian Support?

I have worked for Presbyterian Support since August 2016 (4 years).

What do you do?

My current role is Youth Transition Worker. I work with young people who are preparing to leave care or the custody of Oranga Tamariki (Ministry for Children).

I get to know these young people from around the age of 16. I work alongside their social worker to help prepare these young people for their journey to become independent adults. When they turn 18 I become their main point of contact until they're 21. I support them, am there for them when they need me, and work alongside them to help them achieve their goals. Some examples are helping set education and training goals, helping them to find

employment, supporting them with their health and wellbeing, showing them how to live independently, and developing life skills.

What's your favourite part of the job?

The young people I work with. It's inspiring to see how resilient and strong these young people are, as they have often faced tremendous trauma in their short years and have been removed from their families.

It's so rewarding when they achieve goals and realise that they are intelligent, that they can achieve great things, and with hard work they can gain the success they deserve and that they can break the cycle! One of them has started university this year which in itself is a very big achievement and goes to show just how remarkable they are.

I'm also very lucky to work with a great group of colleagues, who are supportive and caring.

enliven

"Caring staff are very good with mum."

- Jenny, the daughter of an Enliven member



Age positively with Enliven!

We offer older people practical and social support that maximises independence. Have fun and a sense of purpose in your life.

We provide social work, social programmes, kaiāwhina, counselling, HomeShare and falls prevention.

Ph: 0800 477 874

www.enlivenuppersouth.org.nz

Yes! I would like to help.

Your gift will help vulnerable children, whānau/families and older people so that they are safe, strong and connected. You can make a donation online at psuppersouth.org.nz/donate, by internet banking (ANZ 06-0801-0678233-01), cheque or credit card.

\$10

Will buy educational resources for a parent struggling to manage a troubled child



\$25

Will give a lonely, older person transport for a day out with friends



\$60

Will provide older people with fun games and activities to enjoy



\$150

Will help a child, suffering from trauma, receive vital counselling



\$

I would like to give a gift to support the work of Presbyterian Support



Name

Address

Phone

DOB

Email

Donor ID

(see envelope label)

☐ Cheque

☐ Credit Card

☐ Internet Banking

Card number

Name on card

Expiry date

Signature

POST TO: Presbyterian Support, Freepost 60373, PO Box 13171, Christchurch 8141

All donations are receipted. Gifts over \$5 are tax deductible. NZ Charities Register #CC21765

Thank you!

There are many wonderful organisations who help our communities by giving grants and donations during the year and we're tremendously grateful to all of them. Find them at psuppersouth.org.nz.

As a charity we rely on this financial assistance to support vulnerable children, whānau/families and older people as we work towards a just, compassionate and inclusive society in Te Waipounamu.

The end of cheques

Banks have started phasing out cheques and by July it's likely that most banks will no longer issue and accept them.

We value the ongoing support of our donors and will still accept any donations made by cheque as long as the banks will allow us to.

The good news is there are other ways you can support our work:

Credit Card

- 1 Complete a donation form and post to Presbyterian Support.
- 2 Donate securely online at psuppersouth.org.nz/donate.
- 3 Call 0800 477 874 and use a credit card over the phone (safely and securely).

Bank Transfer

Internet banking, telephone banking or popping into the bank to make a donation. Our bank account is **06-0801-0678233-01 (ANZ)**. So we know who made the donation these details should be included:

- 1 Donor's address
- 2 Donor ID (if known)
- 3 The region the gift is to benefit, e.g. Marlborough

Automatic Payment

For automatic payment information and further assistance please call us on 0800 477 874.